

East Lindsey Local Policing Overview

Marc Jones PCC

Superintendent Pat Coates

Ch Insp Lee St Quinton

Insp Jacky Evans and Matt Bennison

5th December 2023



Marc Jones
POLICE & CRIME
COMMISSIONER

LINCOLNSHIRE
SAFER TOGETHER

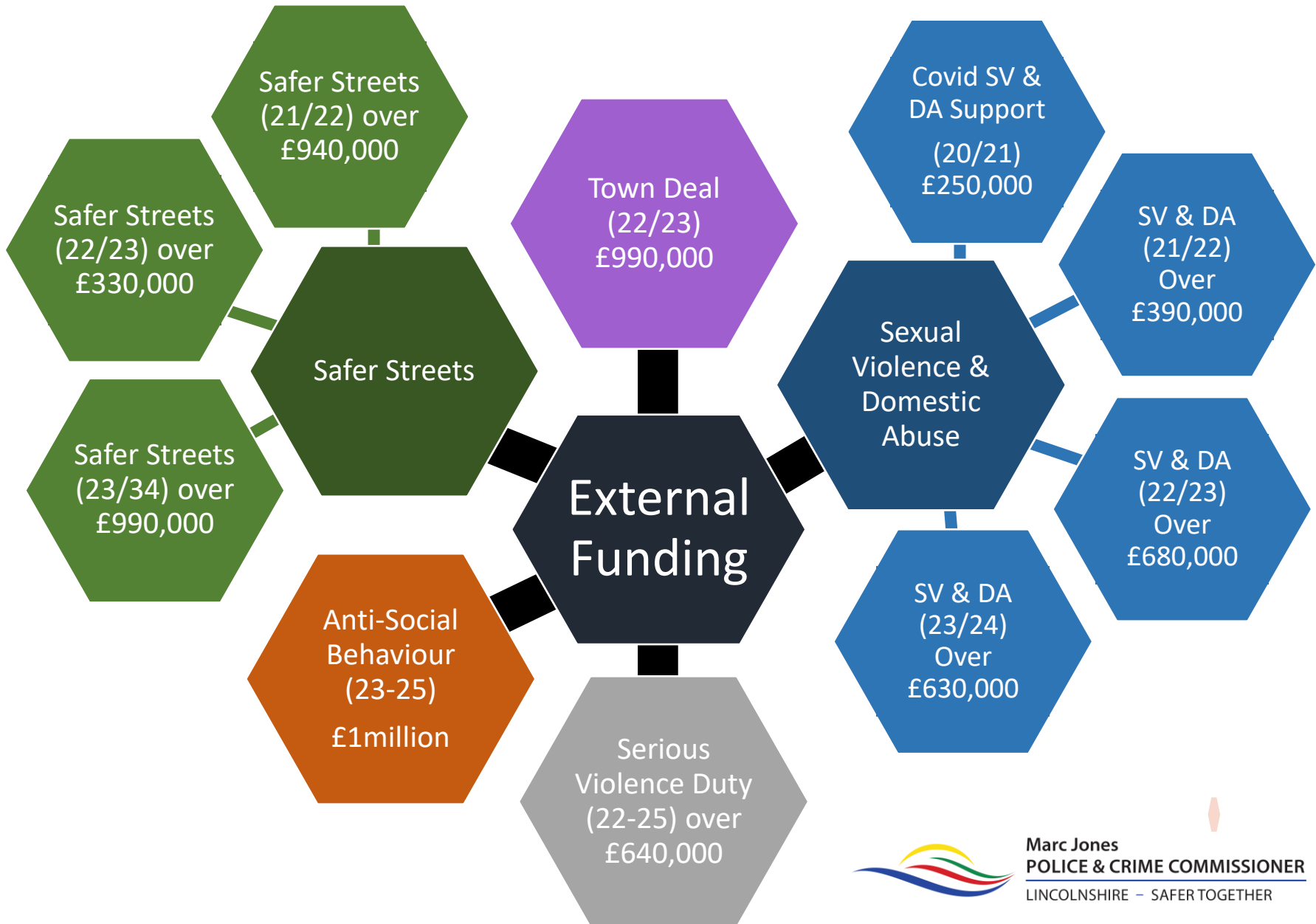




Crime and Policing Survey 2023



Examples of External Funding Secured



Making Lincolnshire Safe



STOP CRIME AND ASB



- We will have sustained success in reducing overall crime and anti-social behaviour over the next 5 years
- We will see sustained reductions in offending
- We will have a workforce who are knowledgeable, confident, skilled & equipped in investigating crime & ASB and the causes of each

PROTECT FROM HARM



- We will have communities who feel safe and protected from harm
- We will have a sustained reduction in repeat victimisation, abuse and exploitation
- We will have a workforce who are knowledgeable, confident, skilled and equipped in problem solving and harm prevention

HELP THOSE IN NEED



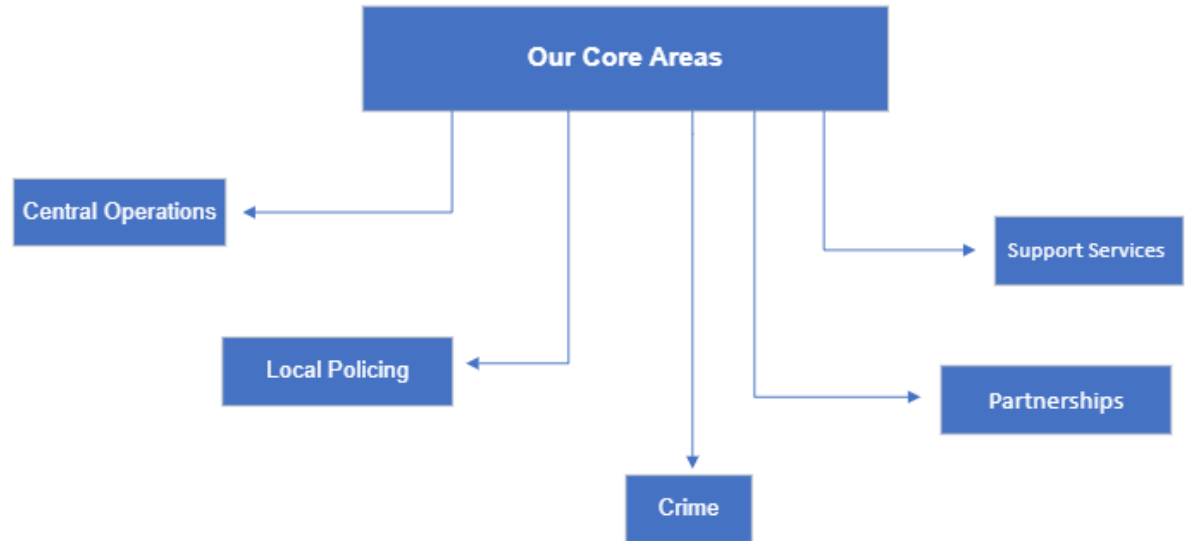
- We will be people focused and offer the highest standard of care with sustained reductions in repeat calls for service
- We will have strong partnerships with common goals and clearly defined support pathways for those in most need
- We will have a workforce who are knowledgeable, confident, skilled & equipped in working with people with complex needs and/or who are vulnerable



Our Force Structure

Our Core Areas:

- Local Policing
- Crime
- Partnerships
- Central Operations
- Support Services



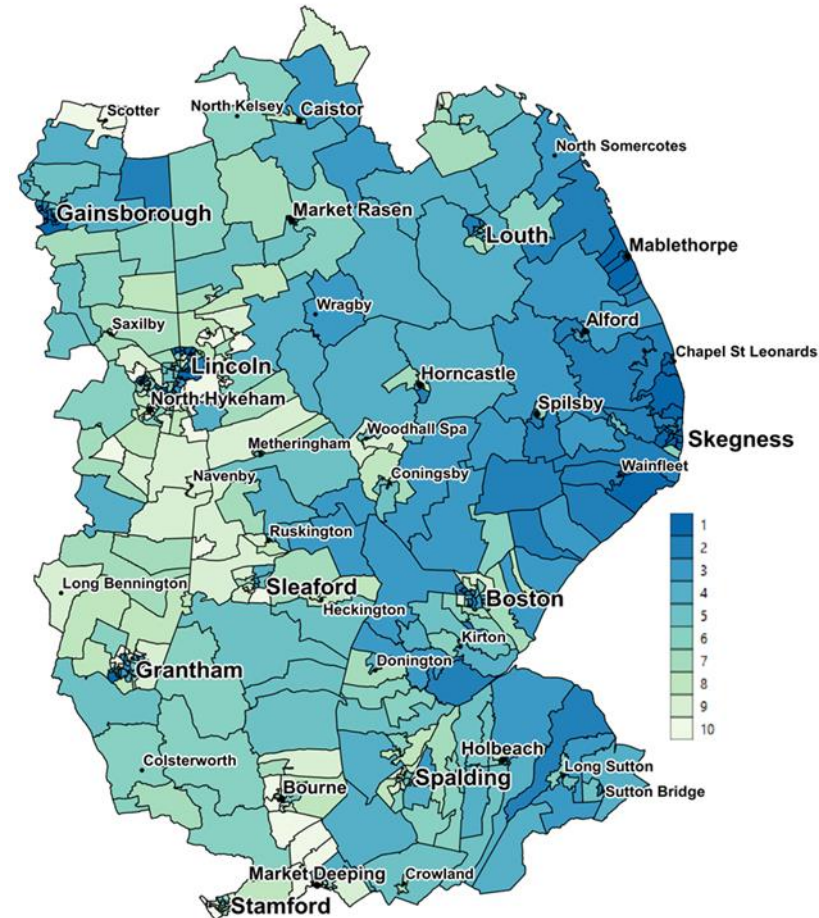
Challenges

- Geography
 - 770k Permanent Residents
 - 43.2 average age
 - 2292 sq miles
- Transport / Infrastructure
- One of most deprived counties in England
- 1 x County Council, 7 x District Council



Deprivation in Lincolnshire

- The areas of highest deprivation in Lincolnshire can be found in pockets of the major towns and along the coast
- The most deprived area in Lincolnshire can be found in **Gainsborough South West**. It is the 24th most deprived neighbourhood out of 32,844 LSOAs in England
- The second and third most deprived areas in the county can be found in **Skegness** and **Chapel St Leonards**



Value for Money

- 1190 Police Officers
- 1020 Police Staff
- 50 PCSOs
- £186.61 million Lowest in England and Wales
- 2.10 officers per 1000 population Nat Avg
3.69
- 96 % of Officers deployed frontline Nat Avg
92%

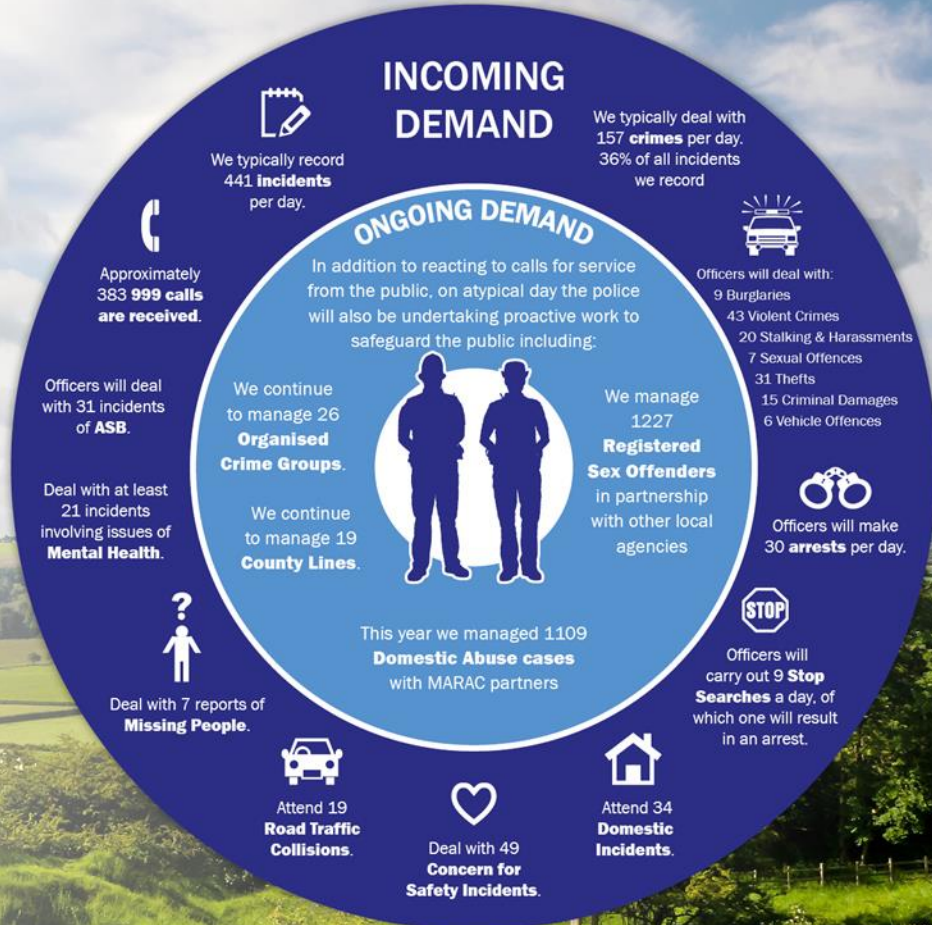


A TYPICAL DAY IN THE LIFE OF LINCOLNSHIRE POLICE



The population of Lincolnshire is approximately **768,400**.

On a typical day there are on average **531** police officers on duty



Local Policing



Neighbourhood Policing Focus

Engagement – We will be informative, have two-way conversations and be active in our communities including with partner organisations

Prevention – We will use structured problem-solving techniques to address local priorities and to prevent crime and anti-social behaviour, working collaboratively with communities and partners

Targeting – We will ensure neighbourhood policing team's activity is in the right areas to provide greater focus to community engagement, problem solving, crime prevention and early intervention



East Lindsey Neighbourhood Policing Team

- Led by a Ch Insp
- 2 x Insps (Coast/Wolds)
- 2x Sgts Coast 2x Sgts Wolds
- 4x CBMS Coast 4x CBMs Wolds
- 7x PCSOs Coast 2 x PCSO Wolds

PCSO deployment based on Vulnerable Location Indices



Force Resources created with Uplift

- Rural Crime Action Team Created
- New Roads Policing Unit with bases at Louth and Grantham
- 9 Additional Response Officers in East Lindsey
- Increase in PVP staff and new investigation hub being opened at Skegness.



The Statistical Process Charts (SPC) are graphs used to study how a process changes over time. The main aims of using SPC charts are to understand what is 'different' and what is 'normal'.

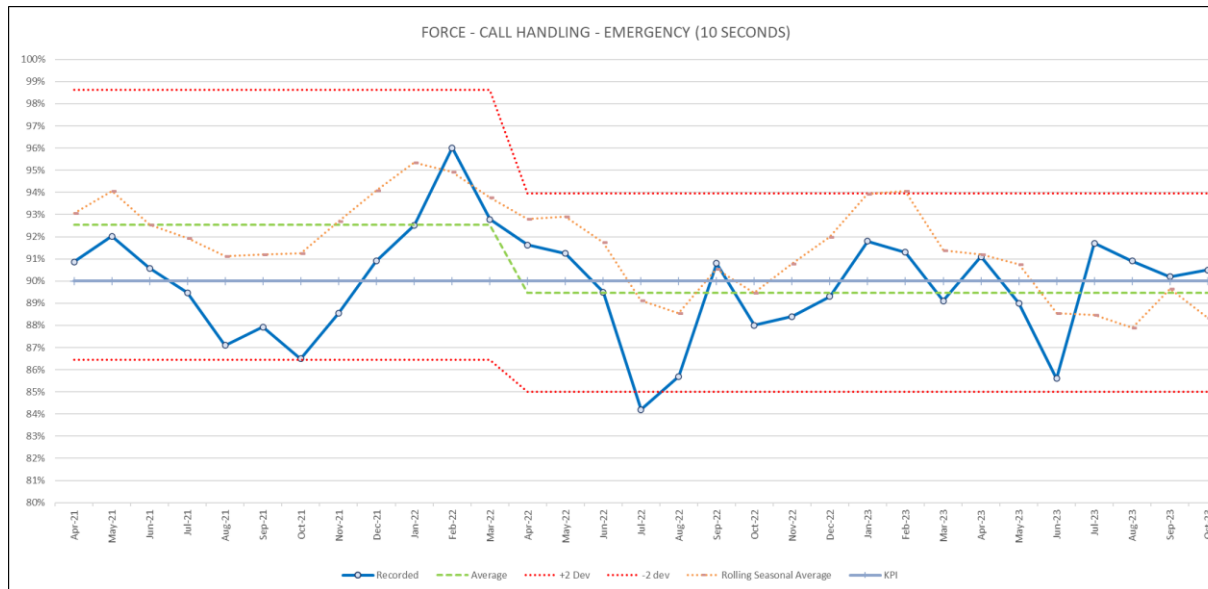
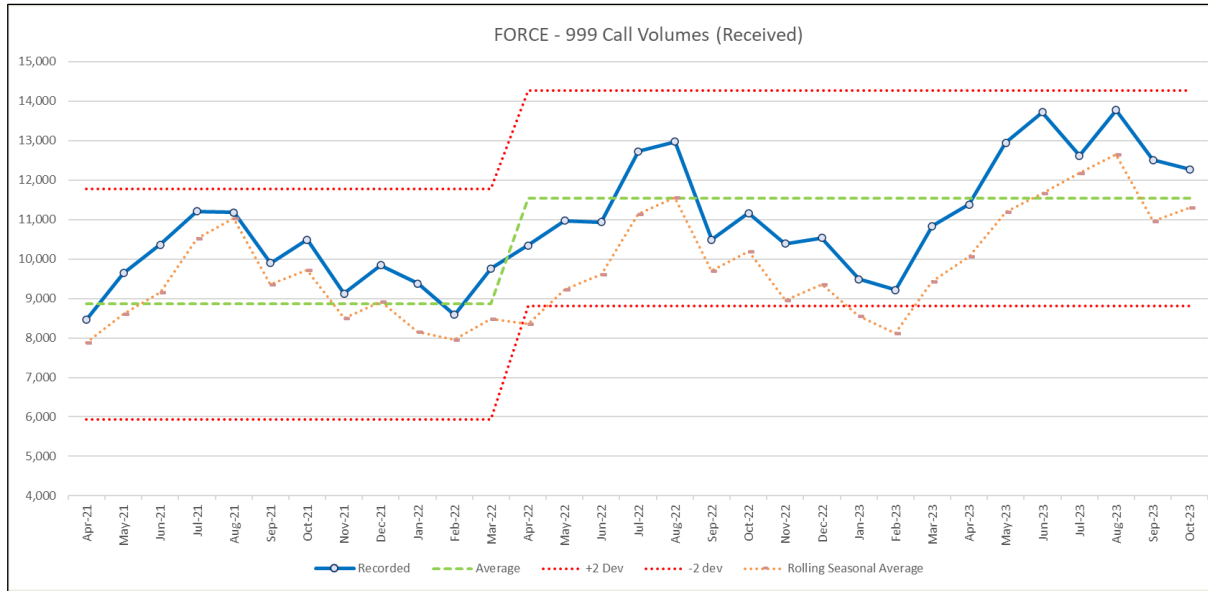
SPC charts require a minimum of 10 data points in order to create a valid chart, although there is increased reliability when using 20 or more data points. Data should also be plotted chronologically in date or process order, usually shown as distinct data points. The following are then calculated:

- 1) Average (mean) based on the previous rolling 36 months to end of the current / most recent reporting month. Any data sets that do not have a full 36 months, use the entire available data set, until a full 3 years are available.
- 2) Standard Deviations used to determine how far a value is from the mean. The SPC charts are set to two standard deviations.
- 3) Seasonal averages are based on the same month for the last 3 years, including the most recent year. For example, the seasonal average for October 2023 is calculated from the average of October 2021 , October 2022 and October 2023.

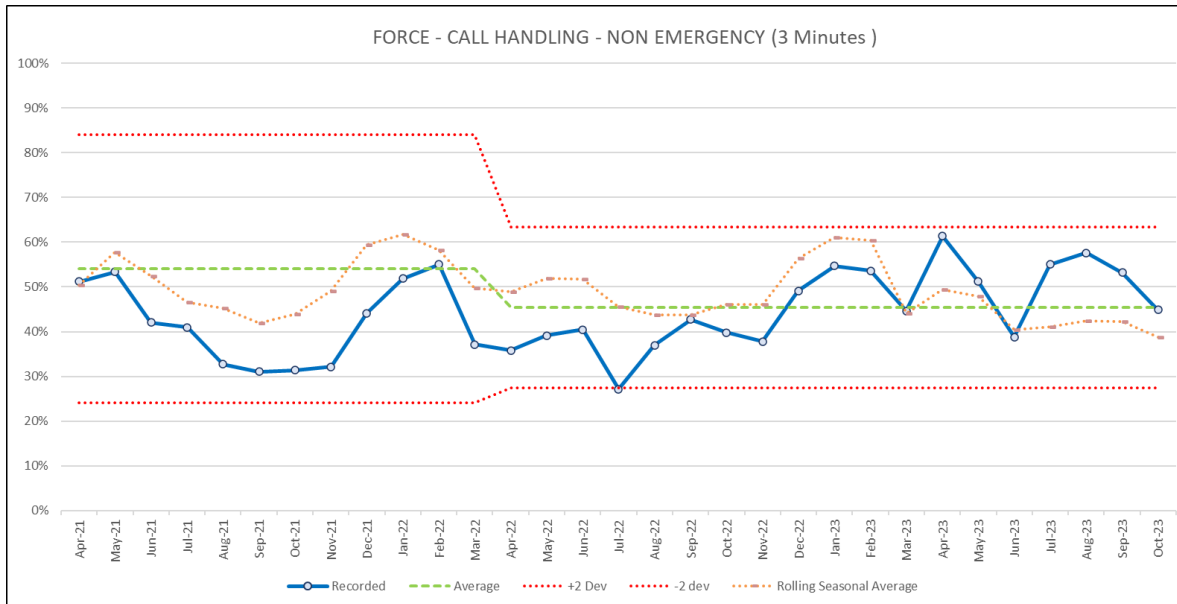
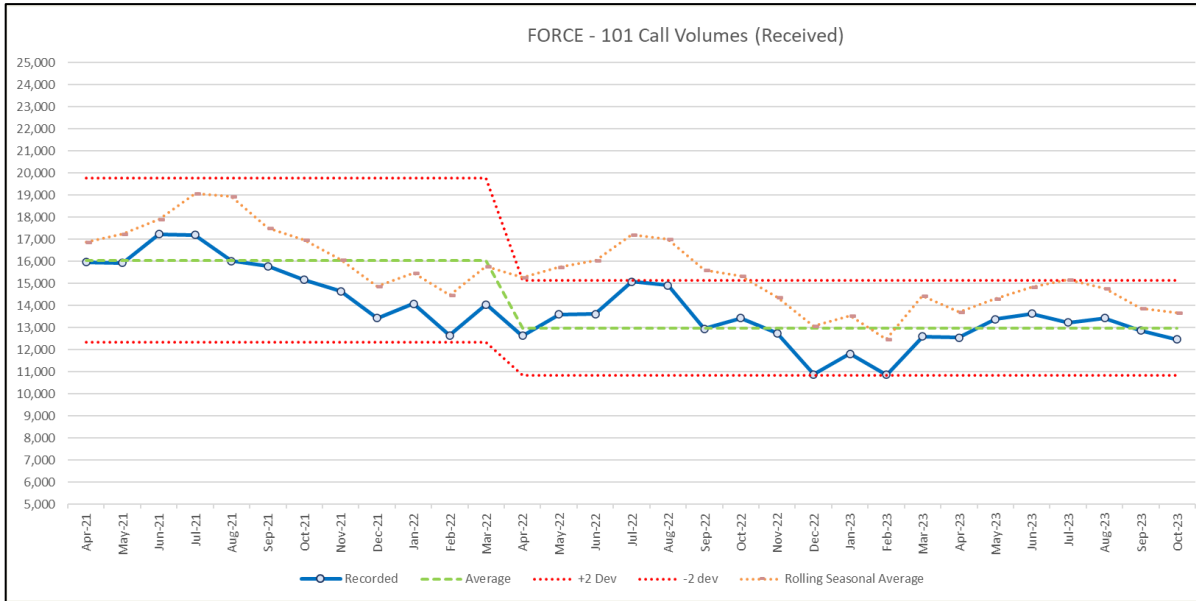
Note the tolerance levels have been re-set as the level of offending has returned to pre-covid levels



Force Call Handling - 999

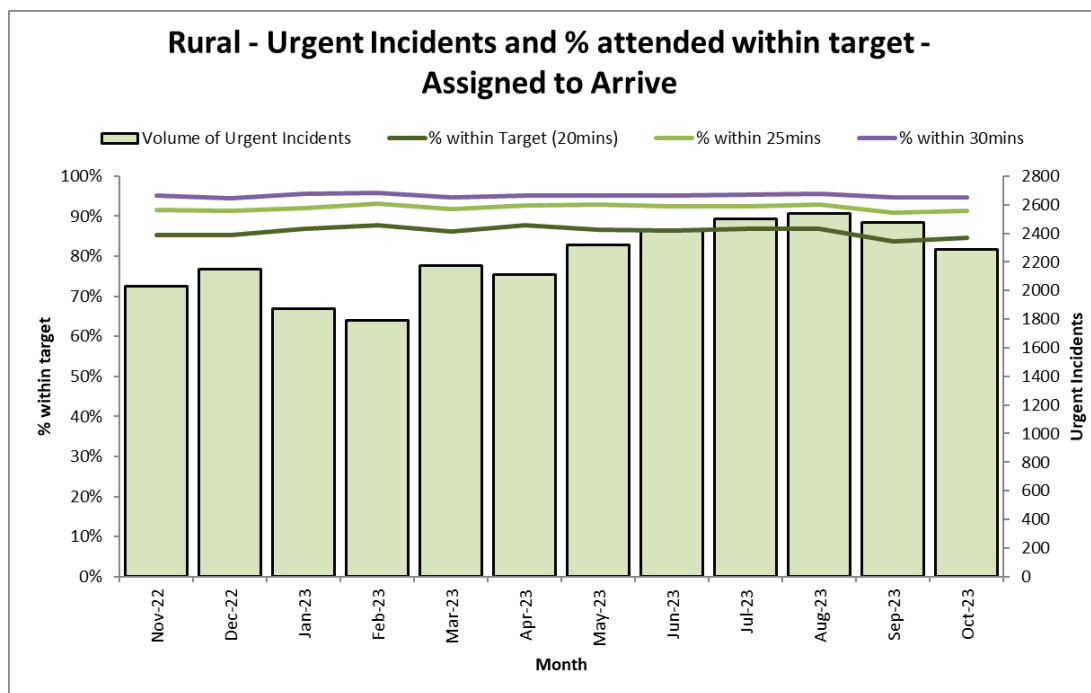


Force Call Handling - 101

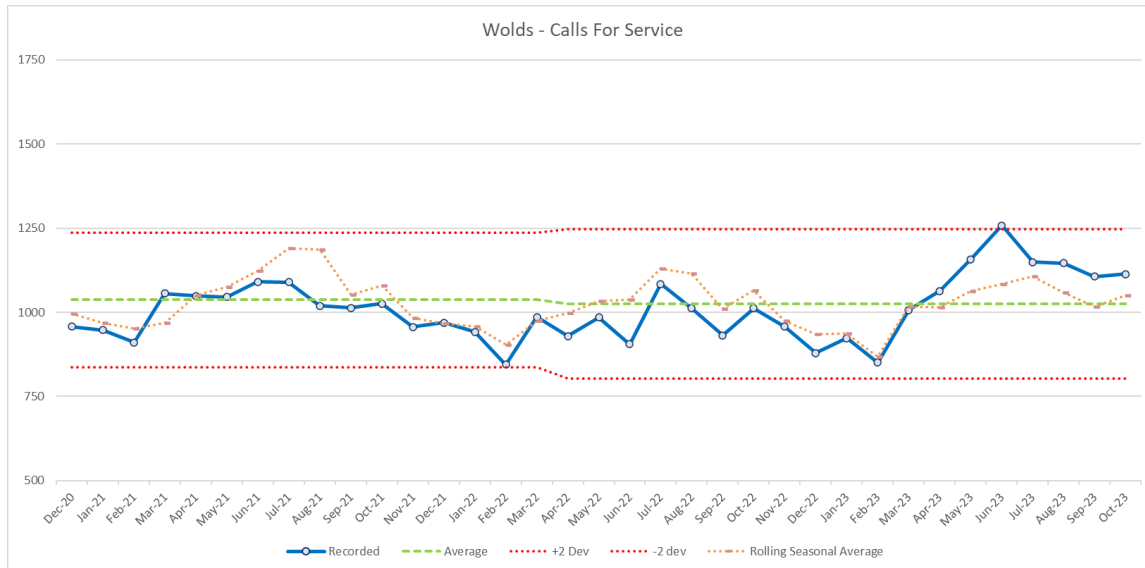
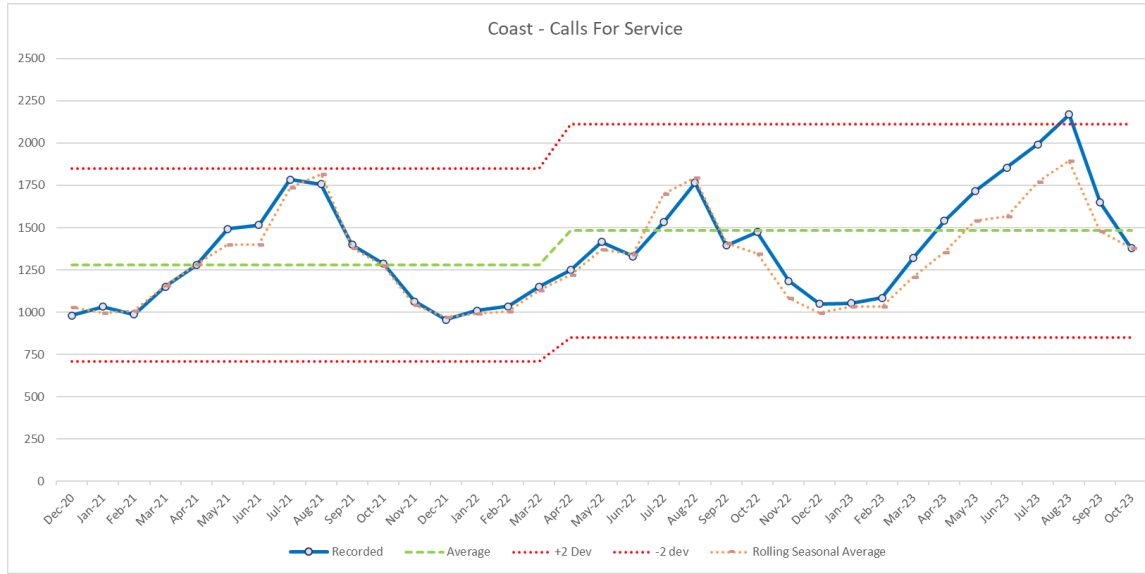


Force Rural Response Times - Assigned to Arrive

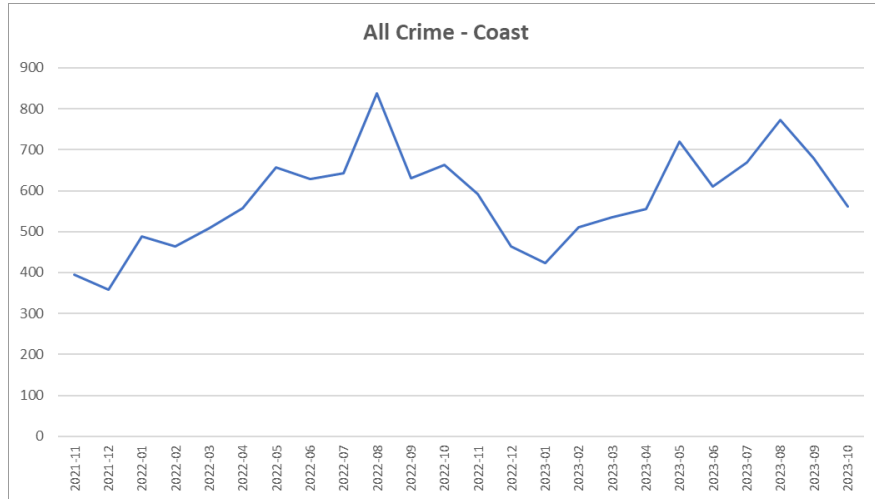
Month	Nov-22	Dec-22	Jan-23	Feb-23	Mar-23	Apr-23	May-23	Jun-23	Jul-23	Aug-23	Sep-23	Oct-23
Volume of Urgent Incidents	2031	2152	1873	1793	2176	2112	2317	2422	2503	2536	2473	2287
Average Attended Time	00:12:10	00:12:05	00:11:42	00:10:58	00:12:33	00:11:41	00:11:43	00:11:47	00:11:41	00:11:21	00:12:54	00:12:24
% within Target (20mins)	85.33%	85.18%	86.81%	87.67%	86.12%	87.83%	86.71%	86.50%	86.94%	86.83%	83.62%	84.61%
% within 25mins	91.63%	91.40%	92.04%	93.14%	91.82%	92.61%	92.92%	92.49%	92.41%	92.94%	90.82%	91.34%
% within 30mins	95.13%	94.38%	95.52%	95.87%	94.76%	95.08%	95.08%	95.17%	95.45%	95.70%	94.66%	94.71%



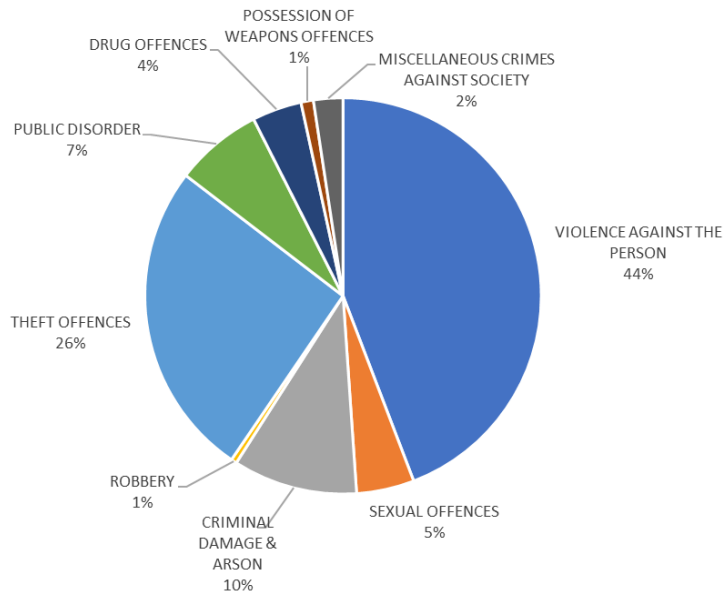
Calls for Service



All Crime - Coast



Last 12mths breakdown of recorded crime - Coast



Breakdown of offences in the top 3 crime groups over the last 12 months = Nov 22 to Oct 23

CRIME GROUP	CRIME TYPE	TOTAL
VIOLENCE AGAINST THE PERSON	HOMICIDE	3
	VIOLENCE WITH INJURY	1057
	VIOLENCE WITHOUT INJURY	1254
	STALKING AND HARASSMENT	820
Sum:		3134

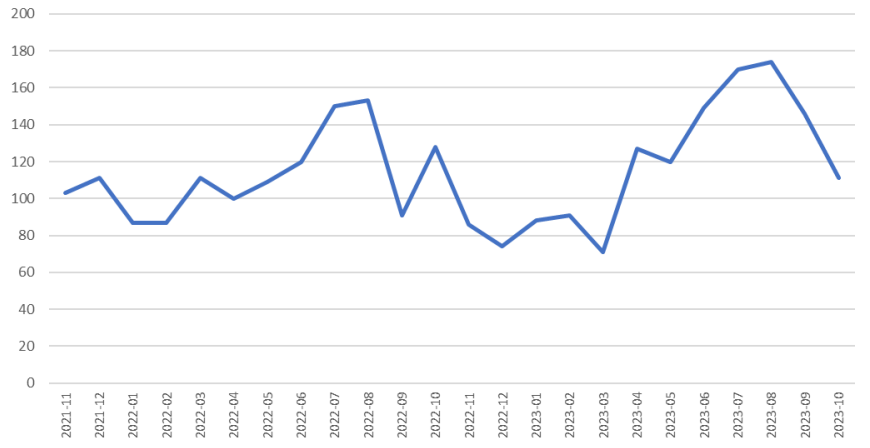
CRIME GROUP	CRIME TYPE	TOTAL
THEFT OFFENCES	BURGLARY - BUSINESS/COMMUNITY	136
	BURGLARY - RESIDENTIAL	314
	THEFT OF MOTOR VEHICLE	94
	THEFT FROM MOTOR VEHICLE	107
	VEHICLE INTERFERENCE	20
	SHOPLIFTING	552
	BICYCLE THEFT	60
	THEFT FROM THE PERSON	15
	ALL OTHER THEFT OFFENCES	539
	Sum:	

CRIME GROUP	CRIME TYPE	TOTAL
CRIMINAL DAMAGE & ARSON	CRIMINAL DAMAGE	664
	ARSON	56
Sum:		720

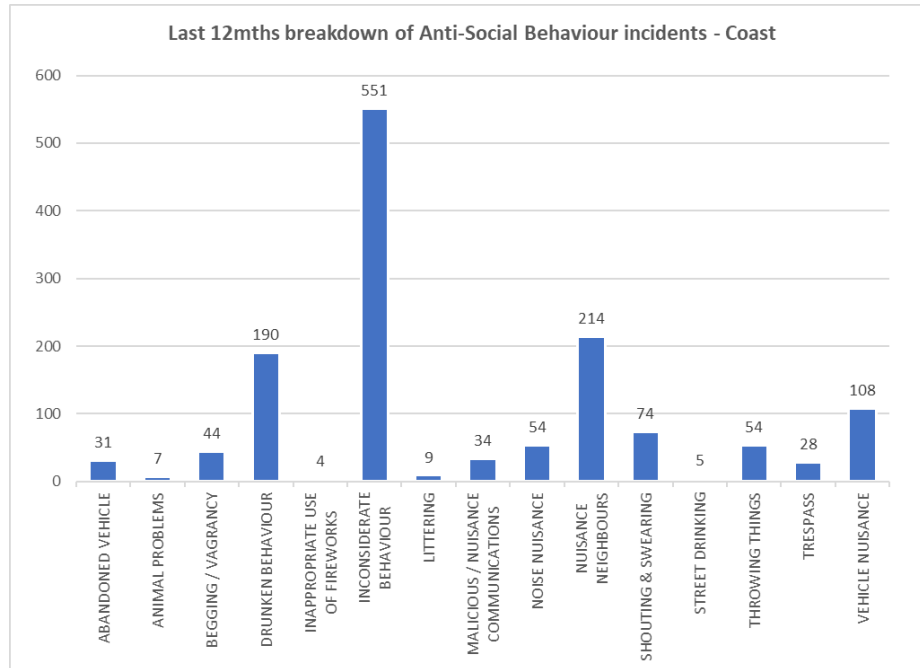


Anti-Social Behaviour - Coast

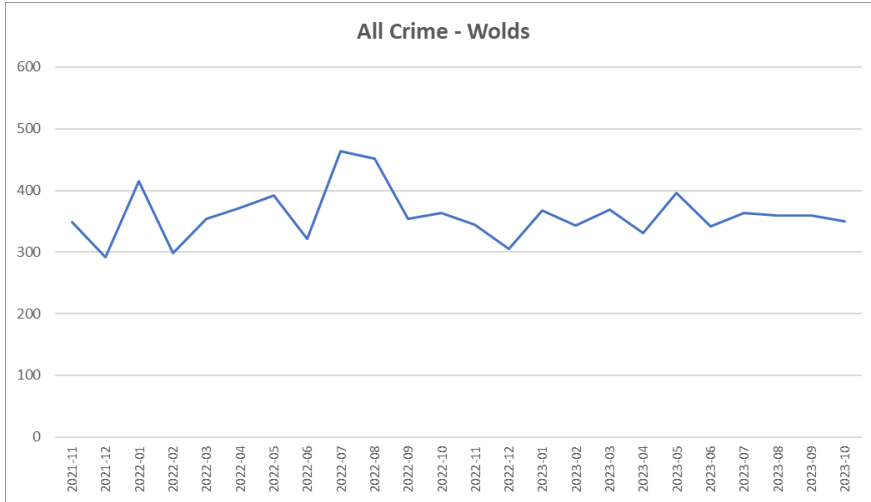
Anti-Social Behaviour - Coast



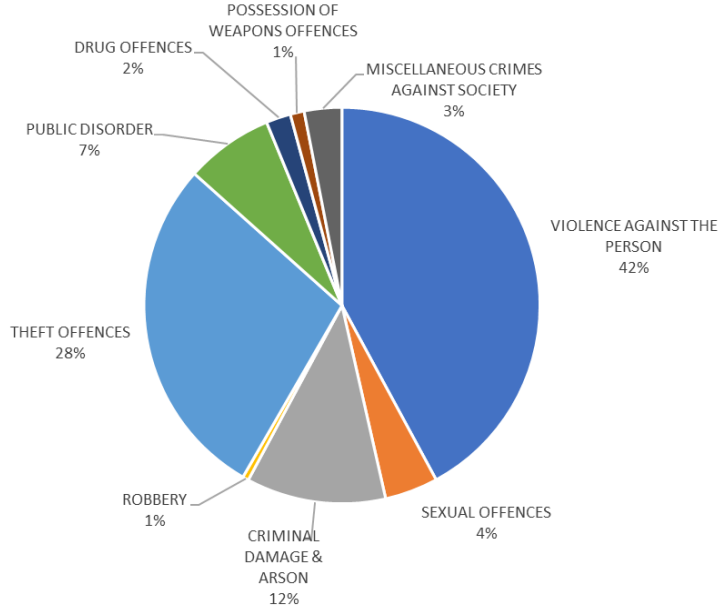
Last 12mths breakdown of Anti-Social Behaviour incidents - Coast



All Crime - Wolds



Last 12mths breakdown of recorded crime - Wolds



Breakdown of offences in the top 3 crime groups over the last 12 months = Nov 22 to Oct 23

CRIME GROUP	CRIME TYPE	TOTAL
VIOLENCE AGAINST THE PERSON	HOMICIDE	1
	VIOLENCE WITH INJURY	566
	VIOLENCE WITHOUT INJURY	626
	STALKING AND HARASSMENT	589
Sum:		1782

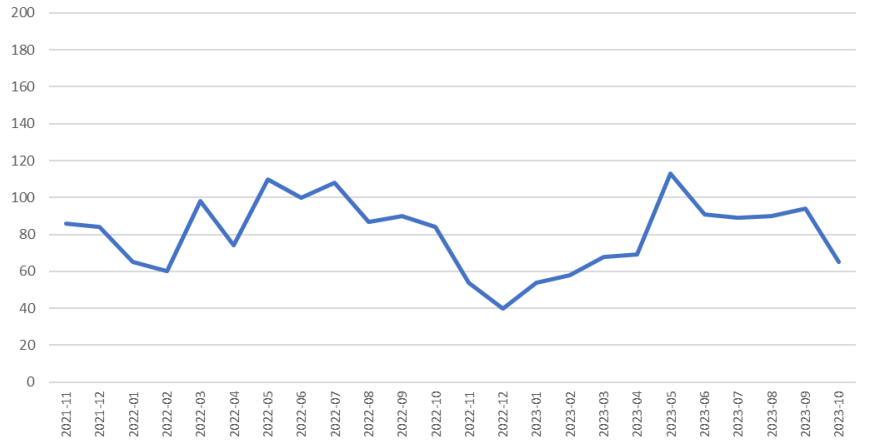
CRIME GROUP	CRIME TYPE	TOTAL	
THEFT OFFENCES	BURGLARY - BUSINESS/COMMUNITY	139	
	BURGLARY - RESIDENTIAL	248	
	THEFT OF MOTOR VEHICLE	60	
	THEFT FROM MOTOR VEHICLE	119	
	VEHICLE INTERFERENCE	21	
	SHOPLIFTING	185	
	BICYCLE THEFT	26	
	THEFT FROM THE PERSON	5	
	ALL OTHER THEFT OFFENCES	391	
	Sum:		1194

CRIME GROUP	CRIME TYPE	TOTAL
CRIMINAL DAMAGE & ARSON	CRIMINAL DAMAGE	453
	ARSON	29
Sum:		482

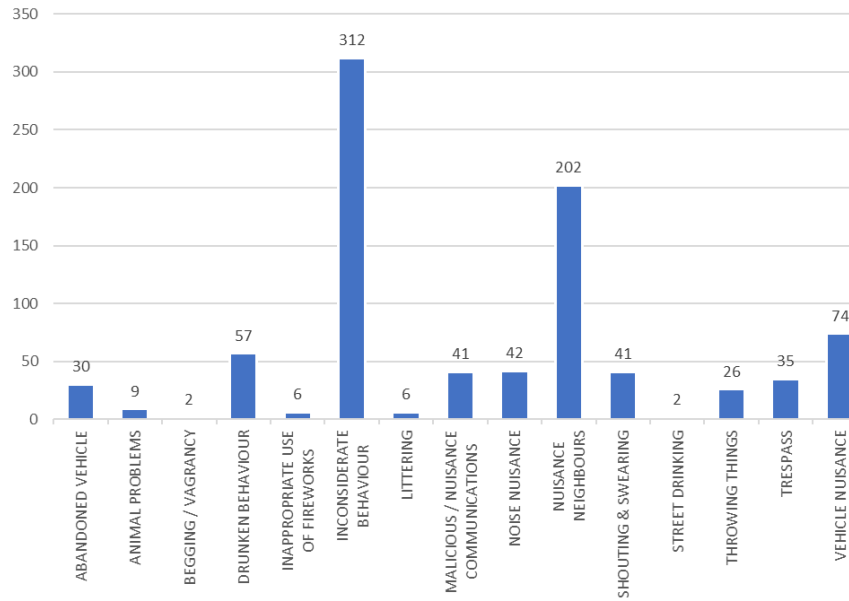


Anti-Social Behaviour - Wolds

Anti-Social Behaviour - Wolds



Last 12mths breakdown of Anti-Social Behaviour - Wolds



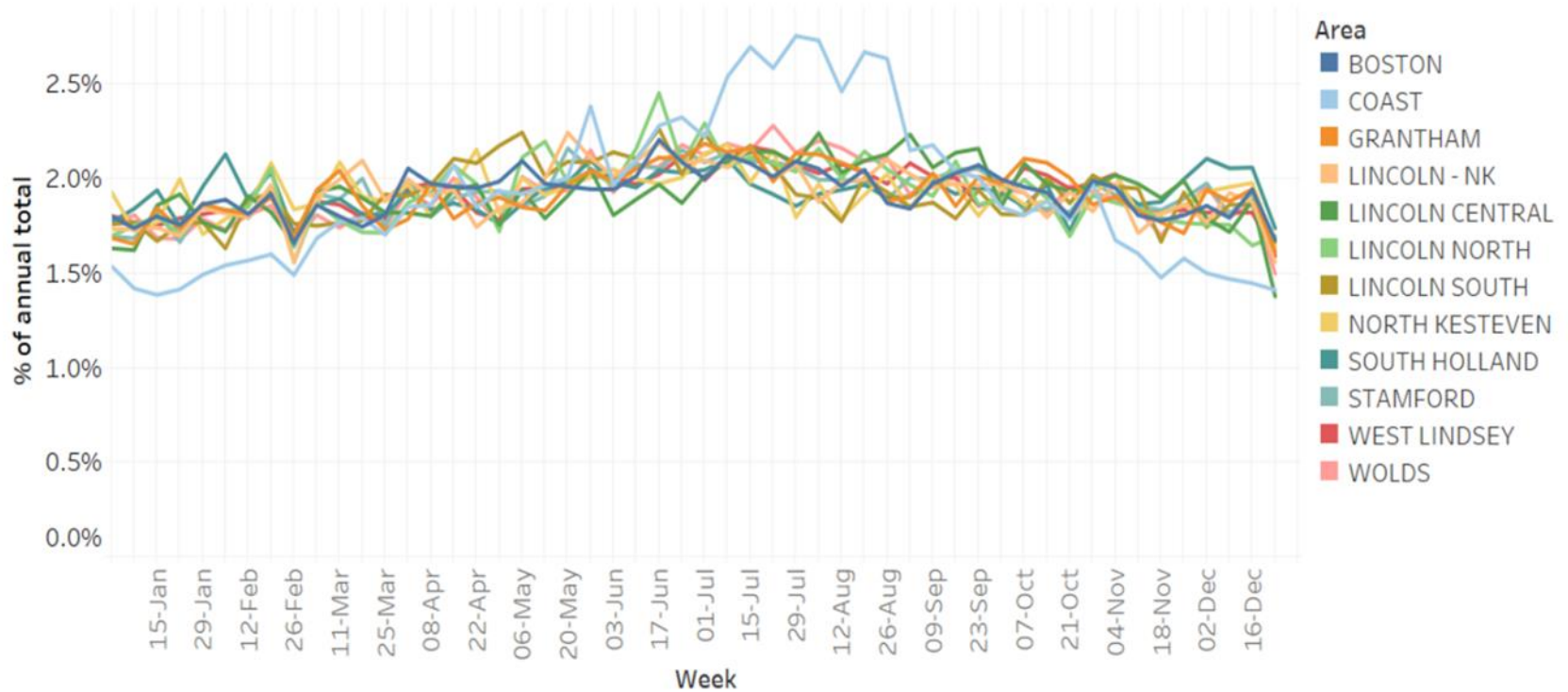
Summer Time Policing Plan 2023



Why did we introduce a new policing plan this year?



Seasonality Profile



Summer Time Policing Plan 2023



How did we deliver on the plan?

Op Songlark



Op California



Op Coastline



Op Atlantis



Op Safe haven



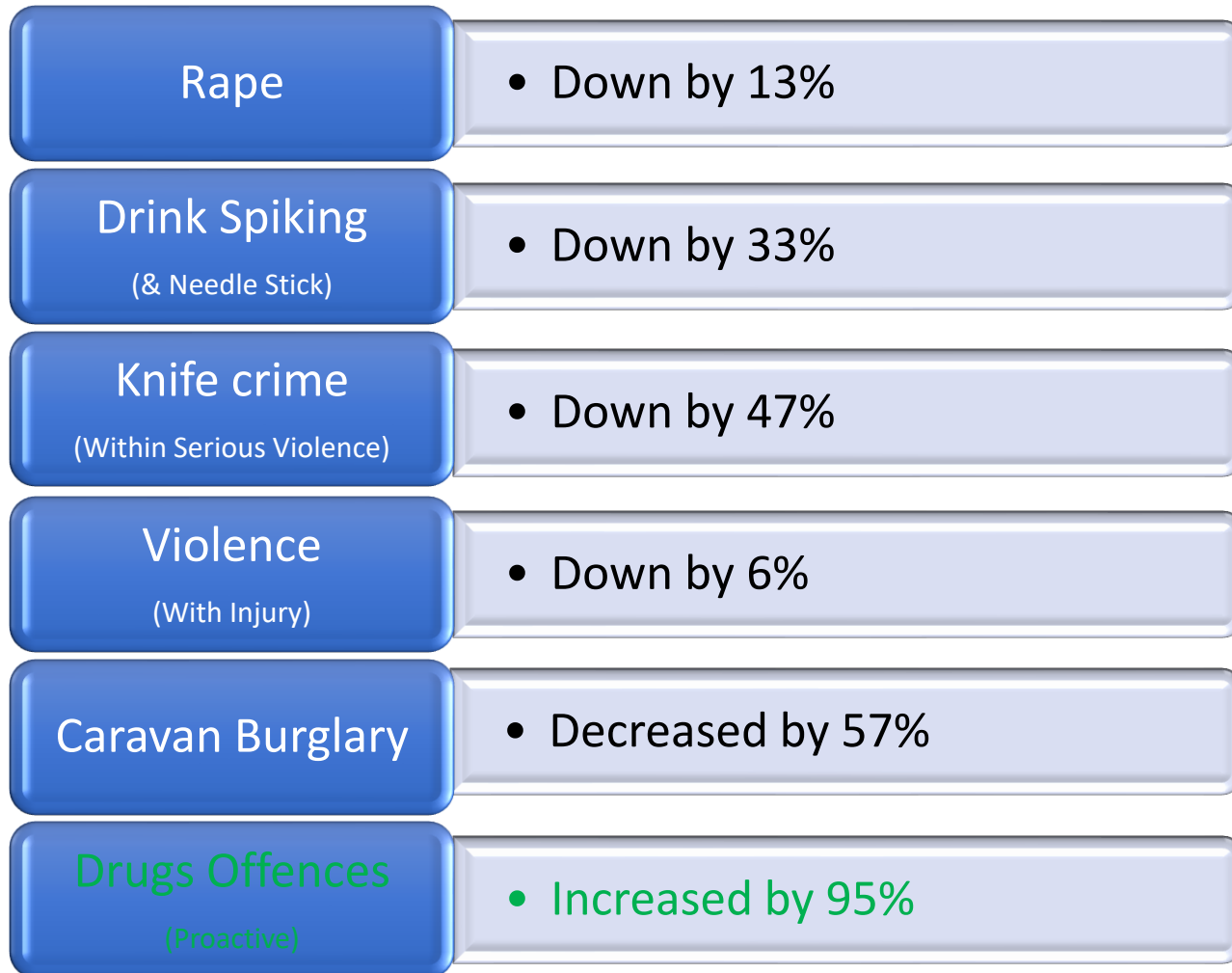
Op Define




Op Sandcastle



What did this mean to our communities that Live, work and Visit the Lincolnshire Coast?




 **Stephen Scarborough**
Well done Lincolnshire Police keep up the good work 🙌

2w Like Reply

 **Patricia Jane Newman**
Nice to see Op California still going strong and proving effective. Always seemed to be appreciated by the majority of local residents and summer visitors.

8w Like Reply

 **Jennifer Kelly**
Well done Lincs police, the most under funded police force in the country and they all do such an amazing job 😊

2w Like Reply 4 🍷



Work of your Neighbourhood Policing Team



Current priorities Skegness

- **Skegness - County Lines drug use in the local area**

Over the last quarter, we have received intelligence and concerns from members of the public who have witnessed drug dealing and the related anti-social behaviour that comes with this. We are building intelligence pictures to obtain warrants with a view to detaining and prosecuting those involved. Drug users often turn to crime to fund their habit so by working with partners to divert users to the appropriate services, we can assist them to reduce offending.

- **Mablethorpe - The team will tackle drugs, with the aim of empowering the community to work with the police and partners to stop drug offences and related incidents.**

There have been several operations in recent months which are currently in the criminal justice phase. These have seen a number of arrests being made for offences such as conspiracy to supply class A drugs, possession of firearms and driving offences. Guilty pleas have been given at court and offenders sentenced for their crimes. We have seized drugs and weapons. Some members of the community have had visits from the Neighbourhood Policing Team to inform them of this and encourage them to report either directly to the police or to Crime Stoppers.



Caravan Burglaries

The Coast of Lincolnshire suffers caravan burglaries across the year. In November, we saw the sentencing of a prolific caravan burglar to 132 weeks imprisonment. This was a joint effort across departments and formed part of Operation Songlark which was the Forces plan to tackle these offences.

Drugs & Summertime Policing

Operation California is a widely publicised deployment of the itemiser which is a machine used to determine the level of a drug in a person's system. This has been deployed numerous times outside licensed premises over the summer and has yielded positive results. This year saw the Force secure funding for the purchase of a knife arch to deter people from carrying weapons and to detect offenders.

Shop Theft

As a Force, we recognise that shoplifting can have an impact on the shops, the economy and the wider community. We have recently seen a prolific shoplifter sentenced to 49 weeks and be issued with Community Behaviour Order which prohibits him from entering any retail premises in East Lindsey bar one.



Speeding

- RPU and ARVs target identified collision hotspots with speed as a contributing factor.
- Identified as one of the Fatal 5 so priority for all Officers to enforce when available to do so.
- Lincolnshire Road Safety Partnership carry out speed enforcement at identified sites in line with Department of Transport Guidance
- Lincolnshire Road Safety Partnership can be contacted to consider a site for Speed Enforcement
- Community Speed Watch
- Work with Highways to engineer out collisions caused by Speed



Parking

- Parking is now a civil offence so no longer enforced by Police responsibility for this is the County Council
- Police will only be involved if vehicle position is causing an immediate danger to other Road Users.
- If vehicles are parking illegally can report to County Council parking enforcement team
- If communities want parking restrictions on Roads the County Council are the authority to contact





<https://www.police.uk/pu/your-area/>



<https://www.lincs.police.uk/cp/crime-prevention/>



<https://www.lincs.police.uk/ro/report/>



<https://nextdoor.co.uk/agency-detail/england/lincolnshire/lincolnshire-police-county-wide/>



<https://www.lincolnshirealert.co.uk/>



Marc Jones
POLICE & CRIME
COMMISSIONER

LINCOLNSHIRE
SAFER TOGETHER



lincs.police.uk
lincolnshire-pcc.gov.uk



@LincsPolice
@OPCCLincs



@Lincs Police
@OPCC Lincs



Kimberley Pickett
Safer Together Team Coordinator
East Lindsey

Kimberly.Pickett@lincs.police.uk



Questions?

